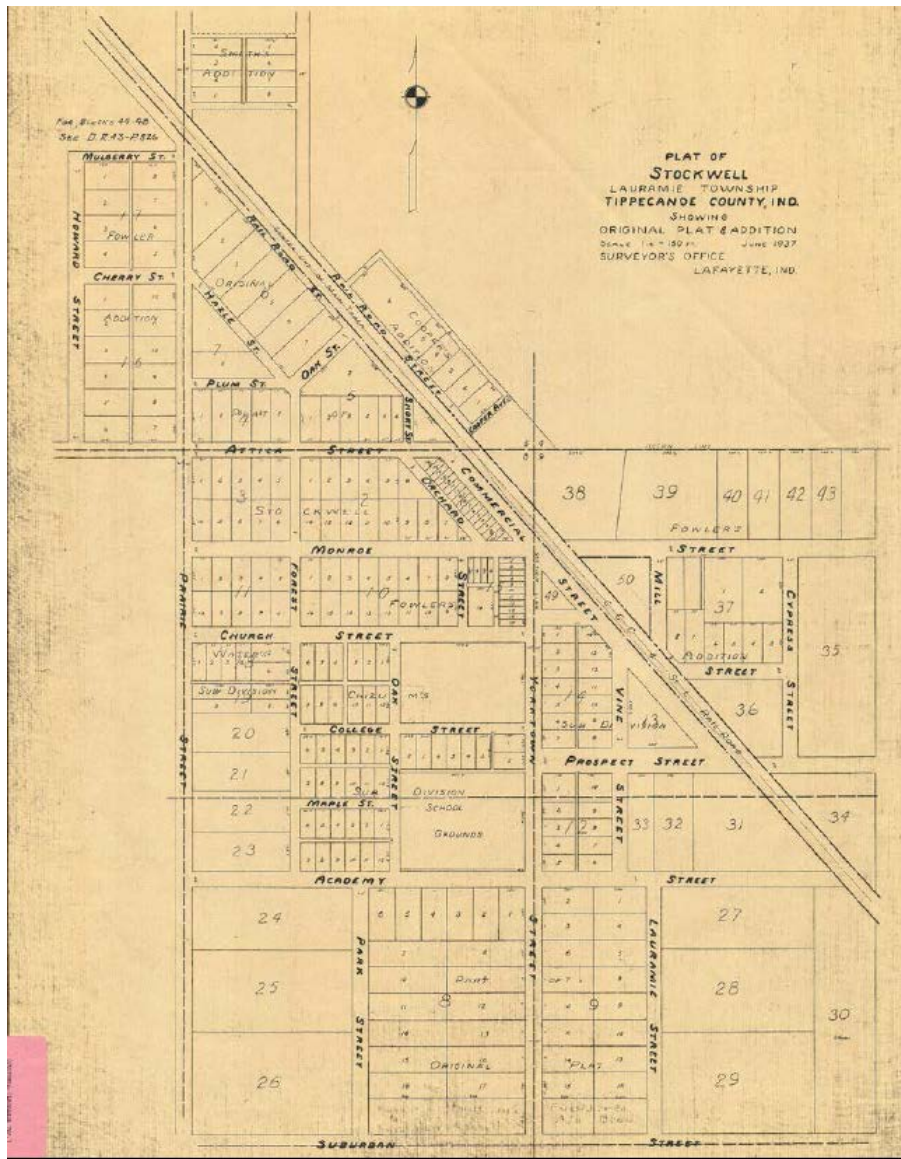


Planning 101: Where do we draw the line?

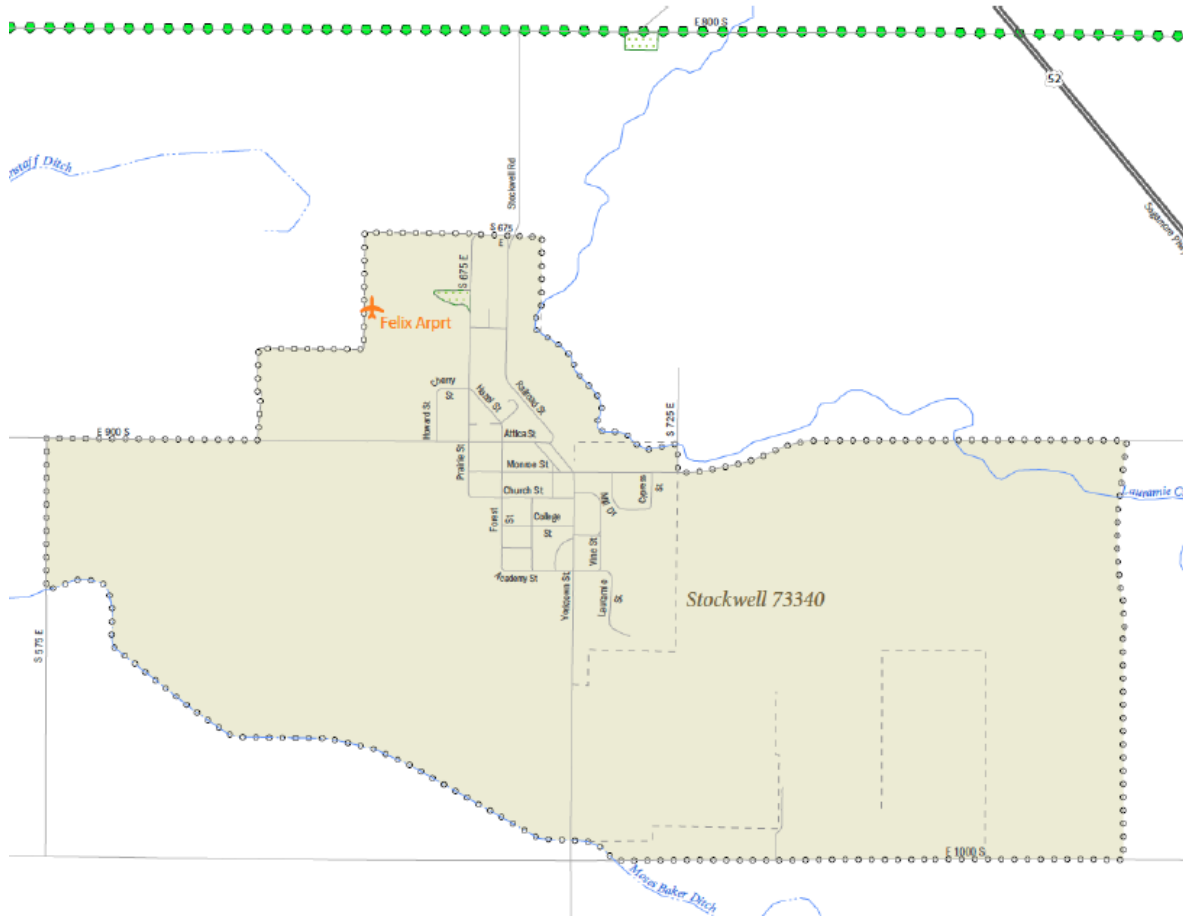


A month before the big town meeting at the church, the Stockwell Steering Committee met with one purpose: to draw the boundary line for the area we are studying. Because Stockwell is not an incorporated town, there are no “town limits” to use. Typically plans for incorporated towns extend well beyond the town limits. After all, how land is used immediately outside of town will also effect the town itself. We looked at several maps, including an historic plat map found in the APC office (to the left).

Plat of Stockwell, drawn by Tippecanoe Co. Surveyor's Office, June 1937

Planning 101: Where do we draw the line?

Census Boundary for Stockwell CDP

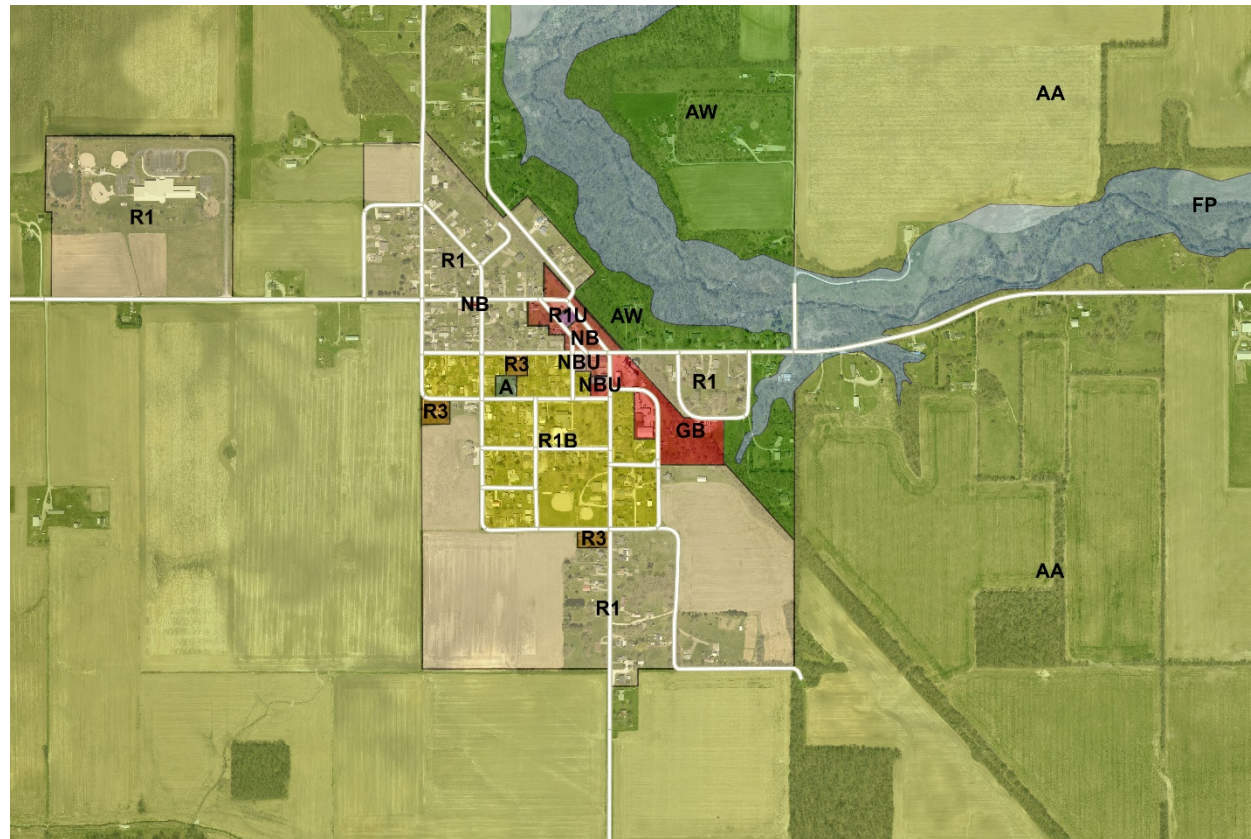


We looked at the location of the Stockwell sewer. Another map we looked at was from the US Census. The map to the left is where residents live that the Census includes when they give the population (435) of Stockwell, Indiana. CDP stands for “Census Designated Place.”

Planning 101: Where do we draw the line?

The group also looked at old as well as current zoning maps for Stockwell and the vicinity. (To the right is the current zoning.)

The group decided that by including a larger area around the town, they could better protect the existing farmland that surrounds Stockwell. After much discussion, a study boundary was created. Below is the extent of the study area the Stockwell Steering Committee decided on that night.



Zoning map from the Tippecanoe County website; current as of November 2021.