

CONSIDERATIONS



Avoid construction in areas that do not need to be disturbed whenever possible. Preserving vegetation both limits the need for erosion prevention measures on disturbed areas, as well as helps to intercept sediment and other pollutants before leaving the site.

Minimizing the total area disturbed has multiple benefits including:

- Remaining vegetation buffers help to filter runoff and decrease sediment in stormwater runoff leaving the site;
- Reduced need for erosion prevention measures;
- Decreased needs for sediment control measures;
- Fewer disturbed areas could potentially result in simplified self-inspections, as a smaller area has been disturbed;
- Disturbing the least area possible can help with inspections from regulators and may benefit overall site compliance;
- Preserving existing vegetation will minimize costs associated with additional erosion prevention and sediment control measures;
- Smaller disturbed areas will decrease the costs to permanently stabilize the completed construction site.

Information courtesy of:
www.tcpwq.org



TIPPECANOE COUNTY
PARTNERSHIP FOR WATER QUALITY™

Contact Information

Tippecanoe County:
Dale Snipes (765) 423-9228
dsnipes@tippecanoe.in.gov

City of Lafayette:
Dale Chumley (765) 807-1800
dchumley@lafayette.in.gov

City of West Lafayette:
Marcus Smith (765) 775-5130
msmith@wl.in.gov

Purdue University:
Adam Keyster (765) 494-8004
akeyster@purdue.edu

Town of Battleground:
Ron Holladay (765) 567-4002
Ron@battleground.in.gov

Town of Dayton:
Mark Harlow (765) 296-2533
daytontownmanager@gmail.com

Ivy Tech Community College Lafayette:
Fred Plant (765) 269-5132
fplant1@ivytech.edu

Information developed
by: www.siswac.org

Last updated October 2015



Construction Sequencing

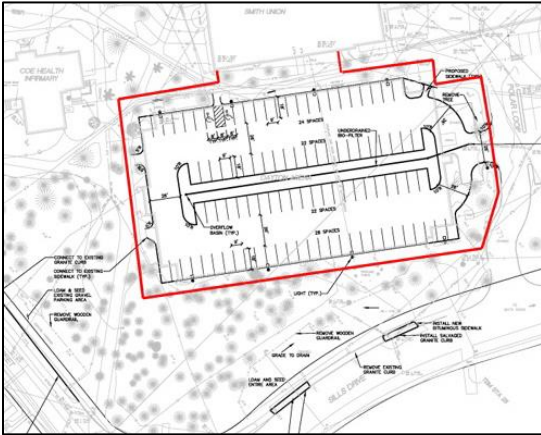


Construction sequencing coordinates the timing of all land disturbing and construction activities. It is vital that all personnel are aware of when and where construction activities are scheduled to take place to maintain permit compliance and protect water quality.

Overview:

- Construction sequencing coordinates when certain activities should take place.
- Sequencing should be clearly reflected on the construction drawings and in the narrative for the erosion prevention and sediment control plan.
- Proper sequencing limits the exposure time of disturbed areas.
- Correct construction sequencing often saves money since fewer erosion prevention and sediment controls are needed.
- Because construction may experience delays, it is not always necessary to specify exact dates for each phase. However, the construction sequence should specify when activities occur relative to each other (e.g., after perimeter controls are in place, initiate phase one of roadway construction.)

EXAMPLES



It is essential that the contractor and all working on the site fully understand the disturbance limits for each phase of the project.



Project plans should clearly specify the order of construction. To minimize delays for plan review and permit issuance, clearly explain the construction sequence on both the drawings and in the erosion prevention and sediment control plan.

PRACTICES TO OBSERVE

DO'S

- Prior to any land disturbing activities, hold a preconstruction meeting and invite all contractors, subcontractors, utility companies, project owners, self-inspection personnel, municipal representatives and inspectors, and others involved with the construction.
- Ensure the perimeter control plan is in place, including construction entrances, perimeter silt fence and barriers, checks, outfall protection, and other measures identified on the approved plans.
- Whenever possible, rely on phased construction to disturb the least amount of area possible and only those areas identified on the plans.
- Coordinate with municipal inspectors to obtain prior approval on proposed changes to the construction sequence.
- Keep plans updated, including drawings and timelines, and regularly coordinate with all parties regarding changes.
- Reflect on the plans any conditions in the field that were not originally identified (e.g., sinkholes, springs, etc.)
- Clearly designate with flags or other measures the areas that are to remain undisturbed throughout the construction process.
- Through signage, identify where critical areas of the site are, including staging areas, fueling, concrete washouts, and other critical areas, throughout the construction process.
- Stabilize disturbed areas as soon as possible and within the schedule specified in the permit.
- For areas experiencing routine problems, work with appropriate parties to make enhancements to the construction practices.

PRACTICES TO OBSERVE

DON'TS

- Do not disturb areas unless the plans clearly indicate if and when to do so.
- Do not continue to implement a plan that is not functioning properly. Coordinate with your local inspector and the design engineer to make sure appropriate enhancements are made.
- Do not assume that an erosion prevention as sediment control permit grants you the permission to clear the entire site. The plans must be followed or else the permit is being violated.



Photo courtesy of Ocean County Soil Conservation District.

When not used properly, silt fences will not protect against erosion and stormwater runoff. This silt fence was not properly secured into the ground, which allowed stormwater and silt to leave the construction site.

Tip for Maintaining Erosion Protection During Construction... Check all sediment and erosion controls and maintain them on a daily to weekly basis and after any storm event.