

TRACED FROM ORIGINAL TRACING
 TIPPECANOE COUNTY SURVEYOR'S
 OFFICE
 Aug. 1935. A.F.B.

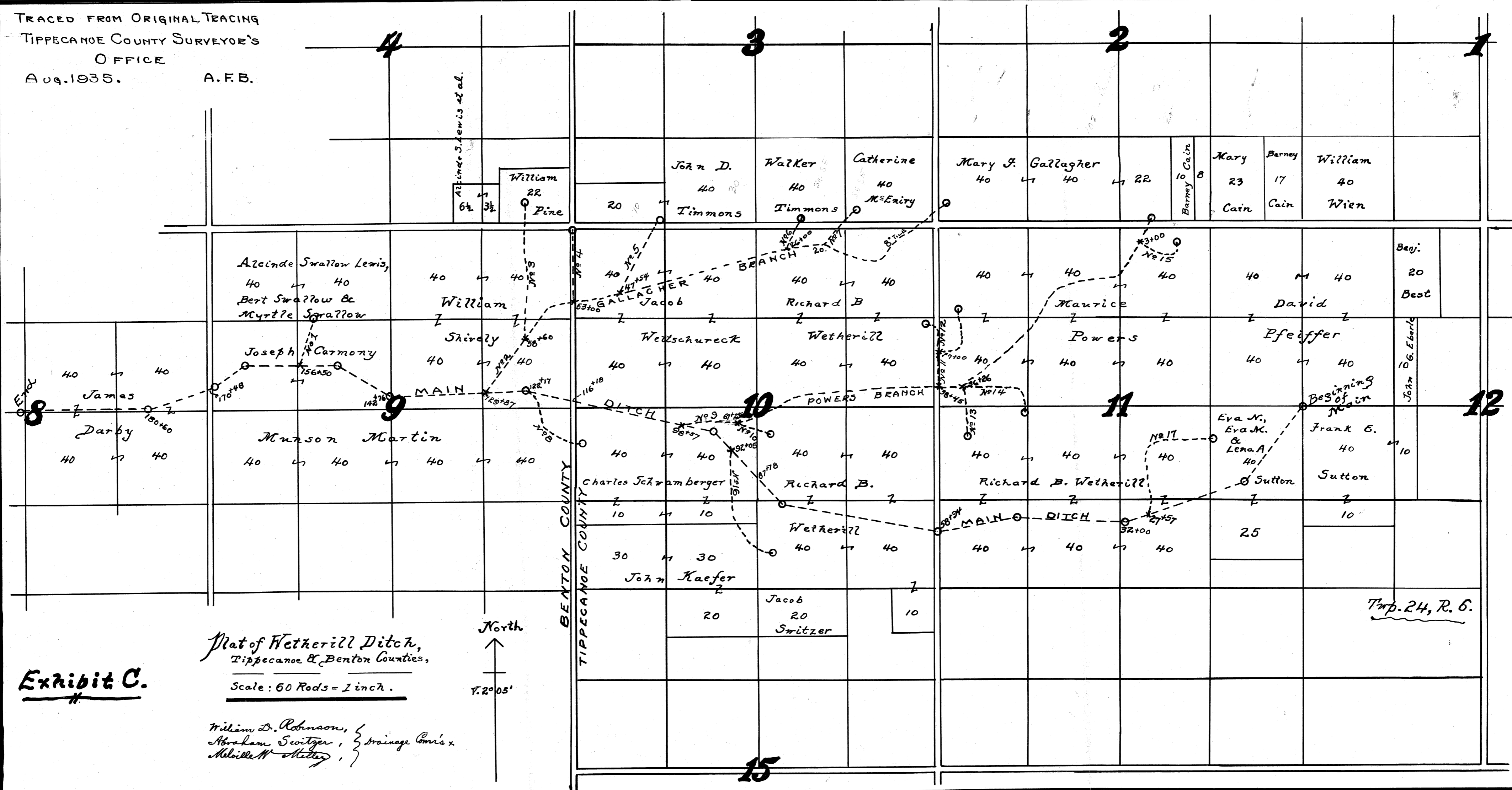
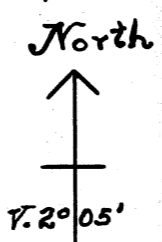


Exhibit C.

Map of Wetherill Ditch,
 Tippecanoe & Benton Counties.

Scale: 60 Rods = 1 inch.



William D. Robinson,
 Abraham Switzer,
 Melville W. Hulley, } Drainage Com's.

Trp. 24, R. 6.